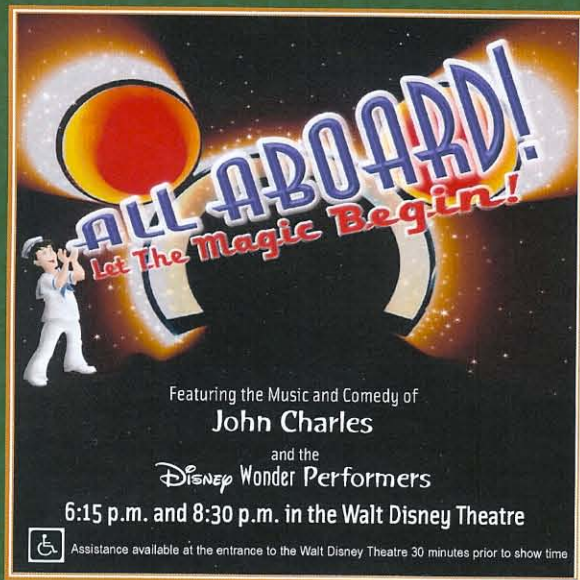


# Disney WONDER

## INAUGURAL ALASKAN CRUISE



## — PERSONAL NAVIGATOR —

VANCOUVER: TUESDAY, MAY 3, 2011

Sunrise: 5:47 a.m. Sunset: 8:31 p.m. Evening Attire: Cruise Casual

All Aboard: 3:45 p.m. Port Departure: 5:00 p.m.

PLEASE REMEMBER TO BRING YOUR KEY TO THE WORLD CARD TO BOAT DRILL THIS AFTERNOON.



## WELCOME ABOARD

### UPON ARRIVAL...

#### YOUR STATEROOM & LUGGAGE

Staterooms will be ready at 2:00 p.m. Stateroom hosts will deliver luggage throughout the day until 5:30 p.m.

#### STATEROOMS WITH BUNK BEDS

Bunk beds are recessed into the ceiling and will be prepared during evening turndown service by your Stateroom Host/ess.

#### TO CHANGE DINING ASSIGNMENT

Requests for different seating times will be taken today:

> 12:00 p.m. - 3:30 p.m. Wavebands

> 3:30 - 5:00 p.m. Please dial 7-10891

#### PALO DINING RESERVATIONS:

Are required and will be taken on a first come basis today at:

> 12:00 p.m. - 3:30 p.m. Wavebands

> 3:30 p.m. - 5:00 p.m. Please leave a voice mail at 7-6843

#### DINNER

5:45 p.m. - First seating, 8:15 p.m. - Second seating

Please check your dining tickets for details of your dining rotation, and bring them to your specific dining location. There is no need to wait in line prior to dinner. Dining Rooms open at designated seating times & your table is reserved each night of your cruise.

PLEASE REMEMBER TO TURN YOUR CLOCKS BACK ONE HOUR BEFORE RETIRING TONIGHT.

SMOKING IS PROHIBITED IN ALL GUEST STATEROOMS.

GUESTS FOUND SMOKING IN THEIR STATEROOMS WILL BE CHARGED A \$250 STATEROOM RECOVERY FEE.

ALL SHIP SERVICES WILL BE SUSPENDED BETWEEN 3:30 P.M. AND 4:30 P.M. DUE TO THE MANDATORY BOAT DRILL.

### Today Only Digital Camera Sale

Save \$50 and get a free camera bag.  
14 megapixels, 5 x Optical zoom, for only  
\$149.95. Available in Shutters, Deck 4 Aft.  
Limited stock available!



Celebrate your Disney Cruise  
...one photo at a time.

### Embarkation Special

Enter our embarkation raffle for a  
chance to win two 8 x 10 photos.

### DON'T MISS...

#### ADVENTURES AWAY

4:15 p.m. *Goofy's Pool Stage*

Earn your status as V.I.P. sailors as your Cruise Director Christiaan, your Disney Pals, and the Cruise Staff officially begin your "Adventures Away".

#### MICKEY MANIA

7:30 p.m. *Studio Sea*

Join us for the Ultimate test of your Disney knowledge as we play our live, interactive gameshow, that's "insania"!

#### FAMILY DANCE PARTY WITH IN-EFFECT

7:30 p.m. *WaveBands*

Music fills WaveBands as our house band, In-Effect, plays popular music for our family dance party.

#### WONDER QUEST

10:30 p.m. *WaveBands (Guests 18 years and older)*

Join Tisa for the wildest and wackiest scavenger team event on the seven seas!



### ADVENTURES AWAY

Earn your status as V.I.P.

sailors as your  
Cruise Director Christiaan,  
your Disney Pals, and the  
Cruise Staff officially  
begin your  
"Adventures Away".

4:15 p.m.  
Goofy's Pool Stage

### DINNER MENU

Animator's Palate: Show Dinner  
Parrot Cay: Island Dinner  
Triton's: French Dinner

### DRINK OF THE DAY

Northern Light (Alcoholic)  
Lava Smoothies (Non Alcoholic)

### IMPORTANT NUMBERS

Fire / Security	7-3001
Medical EMERGENCY	7-3000
Health Center	7-1923



# Ship Directory

Animator's Palate	Deck 4, Aft
Beach Blanket Buffet	Deck 9, Aft
Buena Vista Theatre	Deck 5, Aft
Cadillac Lounge	Deck 3, Forward
Cove Café	Deck 9, Midship
Disney Vacation Club Desk	Deck 4, Midship
Diversions	Deck 3, Forward
Edge	Deck 2, Midship
Flounder's Reef Nursery	Deck 5, Aft
Funnel Vision	Deck 9, Midship
Future Cruise Desk	Deck 4, Midship
Goofy's Galley	Deck 9, Aft
Goofy's Pool	Deck 9, Midship
Guest Services	Deck 3, Midship
Hair Braiding Stand	Deck 9, Midship
Health Center	Deck 1, Forward
Lobby Atrium	Deck 3, Midship
Mickey's Mates	Deck 4, Midship
Mickey's Pool & Slide	Deck 9, Aft
Oceaner Club	Deck 5, Midship
Oceaner Lab	Deck 5, Midship
Outlook Café	Deck 10, Midship

Palo	Deck 10, Aft
Parrot Cay	Deck 3, Aft
Pluto's Dog House	Deck 9, Aft
Pinocchio's Pizzeria	Deck 9, Midship
Port Adventures Desk	Deck 3, Midship
Port Shopping Desk	Deck 3, Midship
Preludes	Deck 4, Forward
Promenade Lounge	Deck 3, Aft
Quarter Masters	Deck 9, Midship
Quiet Cove Pool	Deck 9, Forward
Shutters Photo Gallery	Deck 4, Aft
Signals	Deck 9, Forward
Studio Sea	Deck 4, Midship
Triton's	Deck 3, Midship
Treasure Ketch	Deck 4, Midship
Radar Trap	Deck 3, Forward
Vibe	Deck 11, Midship
Vista Gallery	Deck 4, Midship
Vista Spa and Fitness Center	Deck 9, Forward
Walt Disney Theatre	Deck 4, Forward
WaveBands	Deck 3, Forward
Wide World of Sports Deck	Deck 10, Forward

	12:00	12:15	12:30	12:45	1:00	1:15	1:30
<b>SPECIAL</b>	Movie: High School Musical (G) Funnel Vision						
<b>CHARACTER</b>	For detailed Character appearances, please dial 7-PALS or refer to the information board in the Lobby Atrium.						
<b>MOVIES</b>							
<b>FAMILY</b>							
<b>FAMILY</b>							
<b>FAMILY</b>							
<b>ADULTS</b>	Welcome Aboard!						
<b>ADULTS</b>	Vista Spa Shows and Reservations Vista Spa and Salon						
<b>Teens</b>	Open House						
<b>Edge</b>	Open House						
<b>Oceaner Club</b>	Family Time and Registration						
<b>Oceaner Lab</b>	Family Time and Registration						

	1:45	2:00	2:15	2:30	2:45	3:00	3:15	3:30	3:45	4:00	4:15	4:30	4:45	5:00	5:15	5:30	5:45	6:00	6:15	6:30	6:45
<b>SPECIAL</b>	Walking Ship Tour Meet Deck 10 Forward										Movie: A Bug's Life (G) Funnel Vision >7:31 p.m.										
<b>CHARACTER</b>	For detailed Character appearances, please dial 7-PALS or refer to the information board in the Lobby Atrium.										Adventures Away Goofy's Pool Stage										
<b>MOVIES</b>											All Aboard: Let the Magic Begin Walt Disney Theatre >7:33pm										
<b>FAMILY</b>	Open House and Registration Oceaner Club and Oceaner Lab										Secretariat (PG) Buena Vista Theatre >7:33pm										
<b>FAMILY</b>											Adventures Away Goofy's Pool Stage										
<b>FAMILY</b>											Pre Dinner Music Promenade Lounge										
<b>FAMILY</b>											Evelina at the Keys Lobby Atrium										
<b>ADULTS</b>																					
<b>ADULTS</b>	Vista Spa Shows and Reservations Vista Spa and Salon										Gym Orientation Vista Spa Gym										
<b>Teens</b>	Open House										Open House										
<b>Edge</b>	Open House										Open House										
<b>Oceaner Club</b>	Open House										Family Time and Registration										
<b>Oceaner Lab</b>	Open House										Family Time and Registration										

Refer to the posted drill instructions on the back of your stateroom door prior to heading to Deck 4. Please bring your Key to the World Card to boat drill.

All ship services will be suspended during this time for the mandatory Boat Drill scheduled for 4:00 p.m. along Deck 4.

	7:00	7:15	7:30	7:45	8:00	8:15	8:30	8:45	9:00	9:15	9:30	9:45	10:00	10:15	10:30	10:45	11:00	11:15	11:30	11:45	12:00
SPECIAL		Limited Edition Pin Station Preludes			Movie: The Lion King (G) Funnel Vision						Peter Pan Lobby Atrium	Movie: Pocahontas (G) Funnel Vision									
CHARACTER		Mickey Lobby		Goofy Lobby		All Aboard: Let the Magic Begin Walt Disney Theatre						For detailed Character appearances, please dial 7-PALS or refer to the information board in the Lobby Atrium.									
MOVIES					Secretariat (PG) Buena Vista Theatre										Mars Needs Moms (PG) Buena Vista Theatre						DISNEY DIGITAL 3-D™
FAMILY			Family Dance Party with In-Effect WaveBands			Showtime: All Aboard Let the Magic Begin! Walt Disney Theatre				Evelina at the Keys Lobby Atrium			Disney Karaoke Studio Sea								
FAMILY			Mickey Mania Studio Sea							Disney Disco Studio Sea											
FAMILY			Acoustic Rock with The Dreamers Promenade Lounge										After Dinner Dancing with The Dreamers Promenade Lounge			Drift Away with The Dreamers Promenade Lounge					
ADULTS												In-Effect LIVE WaveBands			Wonder Quest WaveBands		In-Effect LIVE WaveBands		DJ A-Trane WaveBands		
ADULTS			Music and Martinis Cadillac Lounge								Sailing Favorites Cadillac Lounge		College Club Social Diversions		Piano Favorites Cadillac Lounge					Piano & Vocal Requests Cadillac Lounge	
Teens	Open for Teens						Chillin' In Vibe			Teens Only						The Download until 12:00 a.m. / Chillin' in Vibe until 1:00 a.m.					
Edge	Chillin in Edge			Mario Kart Challenge			Edge Profiles & Meet the Counselors						What's New				Explore the Edge				
Oceaneer Club	Memory Wall		Welcome Party		Parachute Games		Dance Party			Family Time - Explore Children's Space											
Oceaneer Lab	Board Games		Wii Sports		Welcome Aboard Party		Gaga Ball		Make Your Own Door Sign				Chess & Checkers			Movie Time					



## HOURS OF OPERATION

Flounder's Reef Nursery	12:30 p.m. - 11:30 p.m.	7-18500
Oceaneer Club	12:30 p.m. - 12:00 a.m.	7-1440
Oceaneer Lab	12:30 p.m. - 12:00 a.m.	7-1445
Edge	12:30 p.m. - 12:00 a.m.	7-5810
Vibe	12:30 p.m. - 1:00 a.m.	7-1456



### FLOUNDER'S REEF NURSERY

**Deck 5 Midship (7-18500)**

Infants and Toddlers can enjoy toys and activities at Flounder's Reef Nursery. Reservations are first come, first served so please stop by!



### OCEANEER CLUB

**Deck 5 Midship (7-1440)**



### OCEANEER LAB

**Deck 5 Midship (7-1445)**

## REGISTRATION FOR 3-10 YEAR OLDS

Meet the Youth Activities Team in the Oceaneer Lab and Oceaneer Club, complete your registration & learn all about the Themed Experiences this cruise!



**CLUBHOUSE SERIES** - The Clubhouse Themed Experiences focus on movement and feature content which appeals to younger children. Recommended 7 yrs & younger.



**STORYBOOK SERIES** - The Storybook Series Themed Experiences are designed with a strong connection to the Disney classic stories.



**JUMP UP! SERIES** - The Let's Move! Themed Experiences will include large ground games & movement-oriented activities.



**CREATE & INVENT SERIES** - The Create & Invent Themed Experiences will have a tactile focus allowing children to create and admire their work.



**IN THE SPOTLIGHT SERIES** - The In The Spotlight Themed Experiences focus on children's stage presence with lots of activities and enthusiasm. Recommended 7 yrs & older.



**SOLVE IT! SERIES** - The Solve It! Themed Experiences are less active, but will challenge children with problem/solutions-based activities. Recommended 7 yrs & older.



**OUT AND ABOUT SERIES** - Set outside the designated Youth Activity spaces, The Kids Out and About Themed Experiences provides the opportunity for families to play together. *Recommended 8 yrs and older.*

## DINE & PLAY

A convenience for families dining at 8:15 p.m., our Youth Activities Counselors will be available at 9:15 p.m. at the entrance of Triton's, Parrot Cay and Animator's Palate dining rooms to bring registered children to join the fun in the Oceaneer Club and Oceaneer Lab.

# FUN FOR THE WHOLE FAMILY

## DISNEY FRIENDS TEA PARTY

Be sure to stop by Guest Services to reserve your special pass for an opportunity to have tea with your Disney friends. (Limited number available).

## TALENT SHOW SIGN UP

Let your family take center stage and strut their stuff. Everybody has a talent — it's time to show off yours! Pre-register at the Port Adventures Desk.

## WALKING SHIP TOUR

**2:30 p.m. Meet at the Deck 10 Forward Elevators**

Enjoy the beauty of the Disney Wonder® with your Cruise Staff on this guided tour.

## LIVE MUSIC WITH THE DREAMERS

**5:15, 7:30, 9:30 and 10:45 p.m. Promenade Lounge**

The Dreamers play LIVE for your listening and dancing pleasure.

## LIMITED EDITION PIN STATION

**7:15 p.m. Preludes**

Unique and one-of-a-kind trading pins available for purchase at our special pin station.

## FAMILY DANCE PARTY WITH IN-EFFECT

**7:30 p.m. WaveBands**

Music fills WaveBands as our house band, In-Effect, plays popular music for our family dance party.

## MICKEY MANIA

**7:30 p.m. Studio Sea**

Join us for the Ultimate test of your Disney knowledge as we play our live, interactive gameshow, that's "insania"!

## DISNEY FAMILY DISCO

**9:45 p.m. Studio Sea**

Join your Cruise Staff team as they play some of your favorite tunes.



## CHARACTER APPEARANCES:

### ADVENTURES AWAY

**4:15 p.m. Deck 9, Midship**

Join Mickey and his friends at the Goofy Pool Stage for this fun and exciting show.

For Daily Character appearances please check your Personal Navigator or dial 7-PALS.

*(To avoid disappointment Guests are advised to arrive by the start time of our character appearances.)*

# ADULT EXCLUSIVE ENTERTAINMENT

## PIANO AND VOCAL FAVORITES

**7:30, 9:30, 10:30 and 11:30 p.m. Cadillac Lounge**

Join Paul Peglar in The Cadillac Lounge as he plays your favorite piano hits. Special set tonight: "Sailing Favorites" (9:30 p.m.).

## IN-EFFECT LIVE

**9:45 p.m. and 11:00 p.m. WaveBands**

Bust a move out on the dance floor with our live band, In-Effect.

## COLLEGE CLUB SOCIAL

**10:00 p.m. Diversions**

Meet other 18 - 21 year olds and share some laughs.

## WONDER QUEST

**10:30 p.m. WaveBands**

Join Tisa for the wildest and wackiest scavenger team event on the seven seas!

## DJ A-TRANE

**11:45 p.m. WaveBands**

Our in house DJ plays the sounds to keep you dancing through the night.



## VIBE (14-17 YEAR OLDS)

**Deck 11 Midship (7-1456)**

### 10:30PM THE DOWNLOAD

Come up to Vibe and help plan all the fun activities you will be doing this cruise with your new friends! We'll use our very own Teens-only intranet database to decide how our week will go!



# MORE TO ENJOY WHILE ONBOARD

## VISTA GALLERY

Visit our Vista Gallery on Deck 4 Mid ship from 6.00pm-9.00pm to view a large selection of Disney art, including giclees on canvas and paper and even some original art pieces.



## SAY CHEESE!!

Receive all your cruise photos in digital format on CD for \$299.95! Conditions apply. Visit Shutters Photo Gallery, Deck 4, Aft for more details.



## PLAN YOUR NEXT CRUISE

Save 10% off most categories and get an onboard credit if you book onboard. Need more info? Call 7-2848 or visit the Future Cruise Sales Desk, Deck 4, Midship.

## SURF @ SEA

\$0.75 per minute or save money by buying blocks of time. \$55.00 for 100 minutes, \$100.00 for 250 minutes and \$150.00 for 500 minutes. Wireless information sheets are available at Guest Services, Deck 3, Midship

## OPERATING HOURS

Vista Gallery	6:00 P.M. - 9:00 P.M.
Disney Vacation Club Desk	5:00 P.M. - 8:00 P.M.
Future Sales Desk	7:00 P.M. - 8:00 P.M.
Goofy's Pool	12:00 P.M. - 11:00 P.M.
Guest Services Desk	24 HOURS
Health Center	4:30 P.M. - 7:00 P.M.
Mickey's Mates	6:00 P.M. - 11:00 P.M.
Mickey's Pool	12:00 P.M. - 10:00 P.M.
Mickey's Slide	12:30 P.M. - 3:30 P.M. 4:30 P.M. - 5:30 P.M.
Mickey Splash Zone	12:00 P.M. - 6:00 P.M.

Port Adventures Desk	12:00 P.M. - 3:30 P.M. 4:30 P.M. - 6:00 P.M. 7:00 P.M. - 8:30 P.M.
Preludes (SNACKS)	5:45 P.M. - 6:30 P.M. 8:00 P.M. - 8:45 P.M.
Quarter Masters	24 HOURS
Quiet Cove Pool	12:00 P.M. - 12:00 MID
Shutters	5:30 P.M. - 11:00 P.M.
Treasure Ketch	6:00 P.M. - 11:00 P.M.
Radar Trap	6:00 P.M. - 11:00 P.M.
Vista Spa Fitness Center	12:00 P.M. - 11:00 P.M.
Vista Spa and Salon	12:00 P.M. - 11:00 P.M.

## Dining Hours

Consumers who order raw or partially cooked, ready-to-eat food of animal origin, are hereby informed that the food is not sufficiently cooked to ensure its safety.

## LUNCH

Beach Blanket Buffet	12:00 P.M. - 3:15 P.M.
Parrot Cay Buffet	UPON BOARDING - 2:30 P.M.
Goofy's Galley	UPON BOARDING - 3:30 P.M.
Pinocchio's Pizzeria	UPON BOARDING - 3:30 P.M.
Pluto's Dog House	UPON BOARDING - 3:30 P.M.

## DINNER

Animator's Palate*	5:45 P.M. & 8:15 P.M.
Tritons*	5:45 P.M. & 8:15 P.M.
Parrot Cay*	5:45 P.M. & 8:15 P.M.
Goofy's Galley	4:30 P.M. - 7:00 P.M.
Pluto's Dog House	4:30 P.M. - 9:30 P.M.
Pinocchio's Pizzeria	4:30 P.M. - 7:00 P.M.

\*Pre-arranged seating assignments

## LATE NIGHT SNACKS

Promenade Lounge (Family)	11:00 P.M. - 12:00 MID
Diversions (Adults)	11:00 P.M. - 12:00 MID

## ADDED FEATURES

Beverage Station	24 HOURS
Room Service	24 HOURS

## Bar Hours

Bars are solely for adults 18 and older, except during scheduled family events. Adults must be 21 and older to consume alcoholic beverages.

## ON DECK

Cove Cafe	12:00 P.M. - 12:00 MID
Outlook Cafe & Wine Bar	12:00 P.M. - 12:00 MID
Pinocchio's Bar	9:30 P.M. - 11:00 P.M.
Pluto's Dog House Bar	12:00 P.M. - 7:00 P.M.
Signals Bar	12:00 P.M. - 9:00 P.M.

## LOUNGES

Preludes	OPEN DURING SHOW TIMES
Promenade Lounge	12:00 P.M. - 12:00 MID
Studio Sea	OPEN DURING EVENTS ONLY

## Route 66

(18 AND OLDER AFTER 9:00 P.M.)

Cadillac Lounge (GUESTS 18 AND OLDER)	6:30 P.M. - 12:00 MID
Diversions Bar	12:00 P.M. - 12:00 MID
Wavebands Bar	OPEN DURING SCHEDULED EVENTS OPEN TILL 1:30 A.M.

## PORT AND SHOPPING INFORMATION

Shopping in Alaska? Learn why Alaska has some of the most unique duty free shopping in the World at the Alaskan Port and Shopping Presentation, tomorrow at 12:45 p.m. in the Buena Vista Theatre. Tune into channel 231 to learn more.



## FIND YOUR VACATION PARADISE

Learn more about the benefits of membership in one of Disney's best-kept secret at the Disney Vacation Club Desk on Deck 4, Midship.



VISTA SPA

## TIME TO SPA AT THE VISTA SPA

Not yet booked online? Book and receive any Spa Signature treatment today and receive \$20 off. Visit the Vista Spa Deck 9 FWD or dial 7-1465.

## STAY CONNECTED WITH CELLULAR SERVICE

Cell phone and wireless PDA service is available in guest staterooms through most plans. Pricing varies depending upon your wireless provider and usually includes International roaming rates.



Welcome aboard and get ready to head north for the sights and scenery that all our stops in Alaska have to offer! From whales to glaciers to dog sledding, the opportunities are endless. Our knowledgeable team is standing by to help you plan your Alaskan Adventures. Come see us on Deck 3, Midship at our Port Adventures Desk.

## SHOPPING

mickey's mates



## Disney Cruise Line

### Dooney & Bourke

Visit Treasure Ketch and see this exclusive Disney Cruise Line Dooney & Bourke collection, only available at Disney Cruise Line.

### DCL Blanket

100% cotton throw blanket created exclusively for Disney Cruise Line with the classic ship design. It can be yours for only \$21.95.

### Get Your Cruise Started

Autograph books, pens, lanyards and more available in Mickey's Mates and Treasure Ketch.



## TREASURE KETCH

### Alaska Collectables

Take home a piece of DCL history with an exclusive collection of Disney Wonder Alaska Merchandise. Choose from a variety of merchandise including men's and ladies fashion tees, hoodies, scrapbook s and kits, post-cards and photo albums.

### Disney Cruise Line

### Rolling Duffle Bag

Receive a Disney Cruise Line Rolling Duffle Bag for \$19.95 with any purchase of \$50 or more in Treasure Ketch and Mickey's Mates.

### Designer Watches

Visit Treasure Ketch, deck 4 forward and choose from a wide assortment of designer watches including DKNY, Fossil and Kenneth Cole.

### Walt Disney Theatre

Theatrical performances may use artificial fog, strobe lights, pyrotechnics and other special effects. For the safety of our performers and the comfort of those around you, the use of flash photography and video recording is prohibited.

### Verandah Safety

Please do not leave any combustible materials on your balcony when not present in your stateroom for safety reasons.

### Smoking

For the comfort of our guests the following areas are designated as Smoking areas: Open decks on the Starboard Side (excluding Mickey Pool area). Smoking is not permitted on Deck 4, Starboard from 6:00am to 6:00pm. Smoking is prohibited in all guest staterooms. Guests found smoking in their staterooms will be charged a \$250 stateroom recovery fee.

### Environmental Message

With Disney's commitment to the Environment please refrain from throwing anything over the Ship's side. Thank you.

### No Reserved Seats Policy

As a courtesy to all Guests we kindly advise that the saving of seats is not permitted in the Walt Disney Theatre, and the saving of the sun loungers is not permitted on Deck 9 and 10. Items left unattended will be returned to lost and found at Guest Services Deck 3 Midship.

### Cold and Flu Reminder

Please wash hands frequently and thoroughly, particularly before meals. Contact the Health Center by dialing 7-1923, should anyone in your party become ill.

### Corridor Quiet Hours

As a courtesy to all our Guests, please recognize quiet hallway hours from 10:00 p.m. till 8:00 a.m.

### Inclement Weather

For the safety of all Guests, outdoor events may be changed due to unforeseen weather conditions.

## IMPORTANT INFORMATION

### Security Notice

All Guests (including Children) who wish to disembark or embark the ship are required to present their Key to the World card at the gangway. A photo ID is also required for those Guests who are 18 years of age or older. Guests under the age of 18 are required to have a Parent, Guardian or other responsible adult sign an authorization form at the time it is given out if they wish to go ashore unaccompanied. Authorization forms are available at the gangways and Guest Services.